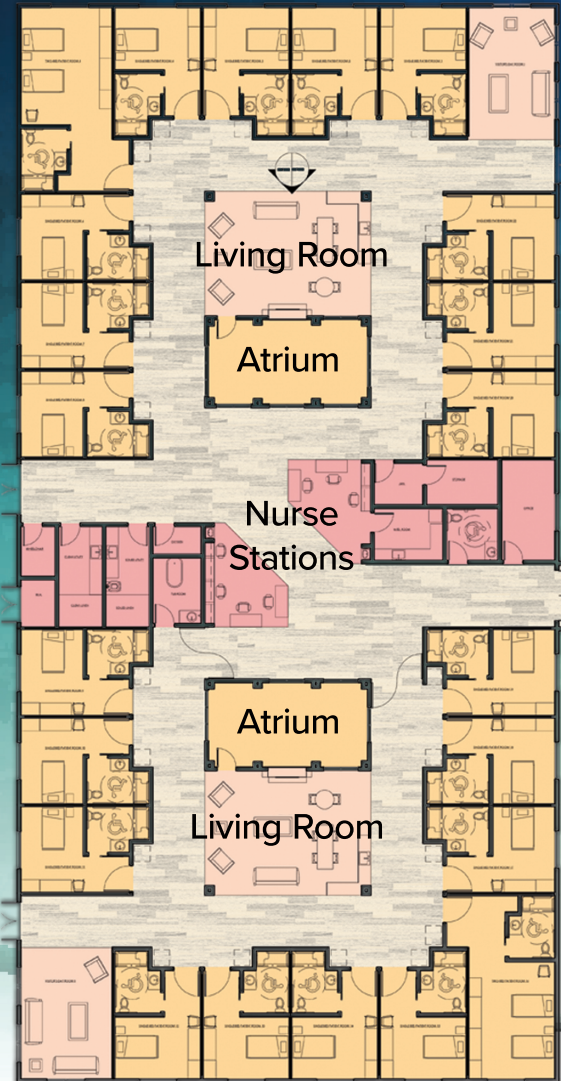


# Demographics

- A third of residents from the Mennonite community
- Two thirds of residents from local communities

## ▼ Planned resident care expansion



# Funding

- Over \$730k raised since 2015 when Study Plan first commissioned
- Projected cost of project: \$6.1 to 7.8 Million

We solicit and sincerely appreciate donations to expanding Grace Home (a 501(C)3 non-profit). Donations are tax deductible.

**To donate or contact us visit**  
**[www.gracehomefoundation.org](http://www.gracehomefoundation.org)**

# Building for our Senior Community



*GH*  
Grace Home



# Beginning

A need was realized in the 1950's when three elderly Mennonite Church members were being cared for in a private home. A state inspector liked the care that was being delivered but recommended that the church start a nursing home. A group was commissioned to study the feasibility.

In 1958 Grace Home opened with eight rooms and capacity for fifteen residents. Labor was donated to build the facility for a cost of \$45,850. Estimated cost for such a facility was \$125,000 (\$1 million in 2019). In 1964 the home was expanded to accommodate 25 residents. The operating capital has been subsidized by the local Mennonite Churches since 1958.



Grace Home as it is today ▲

# Today

- Current day capacity of 33 residents
- Owned and operated by the Ballico, Livingston, and Winton Mennonite Congregations
- Elder care models have changed since 1958
- Resident-centered care requires more private rooms and visiting areas
- Increased resident population without increased infrastructure
- Government reimbursement favors short term rehab over long term care

## Our Mission

*"By love serve one another"*

- Galatians 5:13

### Endeavoring to:

- Provide a safe and secure home for those in need, in a peaceful environment
- Nurture the spiritual and physical lives of our residents, employees, families and neighbors

### Example of planned atmosphere ►

(photo of Sunset Home, Bonners Ferry, ID)

# Future

- In 2019, local Mennonite Churches approved plans for addition and remodel
- Addition will accommodate 24 residents in mostly private rooms with private baths
- Remodel will convert current facility to house 21 residents in private and semi-private rooms
- Total combined capacity of 45 residents
- Neighborhood design used to promote resident centered care
- Home like environment instead of institutional setting
- Will provide more private and compassionate hospice care
- Visiting areas both indoors and outdoors

